

# MACHON LOS ANGELES

A BAIS YAAKOV SCHOOL

**EDUCATING THE MIND**  
**IGNITING THE SOUL**

# INTRODUCING MACHON LOS ANGELES

A BAIS YAAKOV SCHOOL

OPENING SEPTEMBER 2018



## RABBI DOVID REFSON

LETTER OF RECOMMENDATION

As the beautiful Jewish community of Los Angeles continues to grow, the need has emerged for a new girls' high school with exceptional educational standards in a frum environment. I was delighted to hear that a group of capable parents has stepped forward to build "Machon LA"; a school that maintains Bais Yaakov standards while providing students with a comprehensive and outstanding education in both Limudei Kodesh and Secular Studies.

They have recruited two seasoned Torah educators from within the Los Angeles community to make this dream a reality. Rabbi Yisroel Gordon of Kollel Merkaz HaTorah will serve as the Menahel of the school. I have known Rabbi Gordon for years and can personally attest to his leadership qualities, wisdom, and teaching talent. Mrs. Shifra Revah, an experienced and beloved mentor, will lead the school's Mechanechet program, focusing on students' spiritual growth and wellbeing.

These two educators are uniquely suited to address the chinuch needs of the next generation of the Los Angeles community; together with a passionate teaching staff, Machon LA's potential is boundless.

I give my warmest beracha to this sacred endeavor. May you be blessed with siyata d'shmaya and great success!

Sincerely,

*Rabbi Dovid Refson*

Founder & Dean, Neve College for Women

Founder, Bnos Chava, Bnos Sarah & Bnos Avigayil Seminaries

# OUR MISSION

## AT MACHON LA

we are committed to inspiring a passion for *Yiddishkeit* and creating a nurturing environment that challenges each girl to advance and excel in the pursuit of Torah and secular knowledge and all aspects of personal development. Our students mature to be well-rounded, confident, and successful young women who are excited to contribute to their family, community, and the world at large.

## PASSION FOR YIDDISHKEIT

We foster an environment that encourages and inspires spiritual growth, Yiras Shamayim, and refinement of character, fortifying our girls as they deepen their personal connection with Hashem and His Torah.

We instill a love of learning Torah and a commitment to becoming lifelong learners by providing students with the skills necessary for self-directed study.

We infuse our students with Ahavas Yisroel and a love of Eretz Yisroel.

We cultivate in our students pride in being a Jewish woman, in being part of our Mesorah, and in her ability to contribute positively to her community.

## EXCELLENCE IN ACADEMICS

We pursue excellence with uncompromising standards for both Limudei Kodesh and Secular Studies.

We provide a rigorous, integrated college preparatory curriculum that prepares our graduates to excel in higher education and enables them to successfully pursue the careers of their choosing.

We create a stimulating, innovative, and integrative learning environment promoting the development of analytical skills, intellectual curiosity, and perseverance.

## EDUCATING THE WHOLE PERSON

We are an educational community that promotes growth mindset principles and a collaborative teaching and learning environment, encouraging our students to maximize their potential. Our warm, knowledgeable, and open staff are invested in their students success and committed to educating the whole person.

We produce well-rounded individuals who are engaged in exciting extracurricular and co-curricular programs that encourage meaningful relationships, leadership skills, and creativity.

# הנהלה



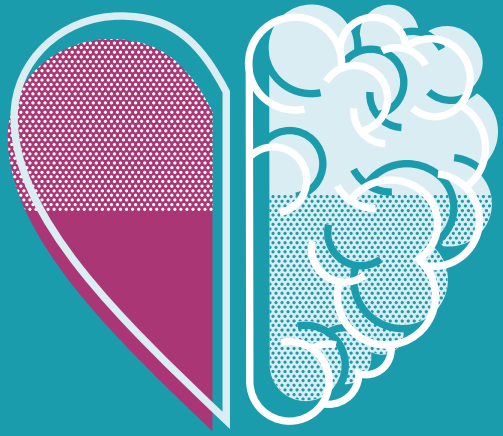
## RABBI YISROEL GORDON MENAHEL

Rabbi Yisroel Gordon studied at Yeshiva Shaar HaTorah in Queens, NY and at Yeshivas Mir Yerushalayim. In 2001, Rabbi Gordon was a founding member of the Jewish Study Network in Palo Alto, where he was editor of the Focus journal and inspired students at the UCSC Hillel House and on faculty at Kehillah Jewish High School. In 2008, Rabbi Gordon moved to Los Angeles where he currently directs community outreach for the Merkaz HaTorah Kollel and teaches at the Bais Yaakov School for Girls.



## MRS. SHIFRA REVAH DEAN OF STUDENTS

Mrs. Shifra Revah has been involved in high school and adult education for almost 30 years. After moving to Los Angeles in 1995, she has taught at Bais Yaakov, YULA Girls, and Bnos Esther. She has served as a teacher of Limudei Kodesh, mechanechet for all grades of high school, and as a seminary guidance counselor. Mrs. Revah is the beloved Rebbetzin of Adas Torah and a much sought after kallah teacher and lecturer to women in the Los Angeles community.



“יִדְעַת הַיּוֹם וְהִשְׁבַּת אֶל לִבְכָּךְ”  
דברים ה'טז

The goals of our Limudei Kodesh program are twofold:

**לֵב AND דַּעַת**  
the education of the mind &  
the education of the heart.

# LIMUDEI KODESH

## “יִדְעַת הַיּוֹם”

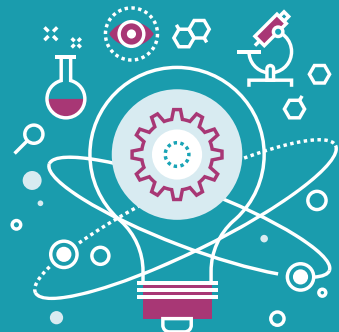
Our curriculum is designed to give our students both deep understanding and broad knowledge of Chumash, Navi, Halacha, Tefillah, Machsheves Yisroel and Jewish History. Text-based learning naturally summons students' highest intellectual abilities. This learning sparks lively and deeply meaningful Torah discussions while sharpening analytical and critical thinking skills. Together with our comprehensive Hebrew language program, students gain the tools they need to become lifelong learners.

## “וְהִשְׁבַּת אֶל לִבְכָּךְ”

More importantly, we endeavor to develop and expand the hearts and souls of our students. We relate to the Torah not merely as a collection of facts and laws; rather, a Jew must fall in love with Torah and Yiddishkeit, turning the da'as she learns into a relevant chochmah that speaks to her personally and drives her to dignify and elevate her life through mitzvos, learning, tefillah, character refinement, and acts of chesed. This transformative process of growth through Torah is an integral part of Machon LA's mission and will be achieved with the guidance of passionate limudei kodesh teachers in conjunction with chesed projects and our Mechanechet program.

## FOUR YEAR CURRICULUM

	9TH GRADE	10TH GRADE	11TH GRADE	12TH GRADE
<b>Chumash</b>	Shemos	Bamidbar	Devarim	Bereishis
<b>Neviim Rishonim</b>	Yehoshua - Shoftim	Shmuel	Melachim 1	Melachim 2
<b>Neviim Acharonim</b>	Trei Asar & Megillos	Mishlei	Yirmiyah	Tehillim
<b>Halacha</b>	Shabbos	Brachos & Tefillah	Kashrus & Yichud	Shabbos
<b>Parsha/Biur Tefillah</b>	Weekly Parsha	Siddur	Siddur	Ramban on the Parsha
<b>Machsheves Yisroel</b>	Kivun Program	Kivun Program	Mesilas Yesharim	The Jewish Woman
<b>Jewish History</b>	2nd Bais Hamikdash	Amoraim - Geonim	Rishonim - Inquisition	Acharonim - Haskalah
<b>Modern Hebrew</b>	Hebrew Language	Hebrew Language	Hebrew Language	Hebrew Language



## KNOWLEDGE & SKILLS

# GENERAL STUDIES

### ACQUIRING KNOWLEDGE

Machon provides a rigorous college preparatory general studies curriculum that prepares each girl to successfully embark on the path she chooses. The core subjects of Science, English, Math, and History are taught at an advanced level and culminate in AP classes. Along with building mastery in core subjects, we provide a well-rounded education including art, an advanced STEM track, and entrepreneurship.

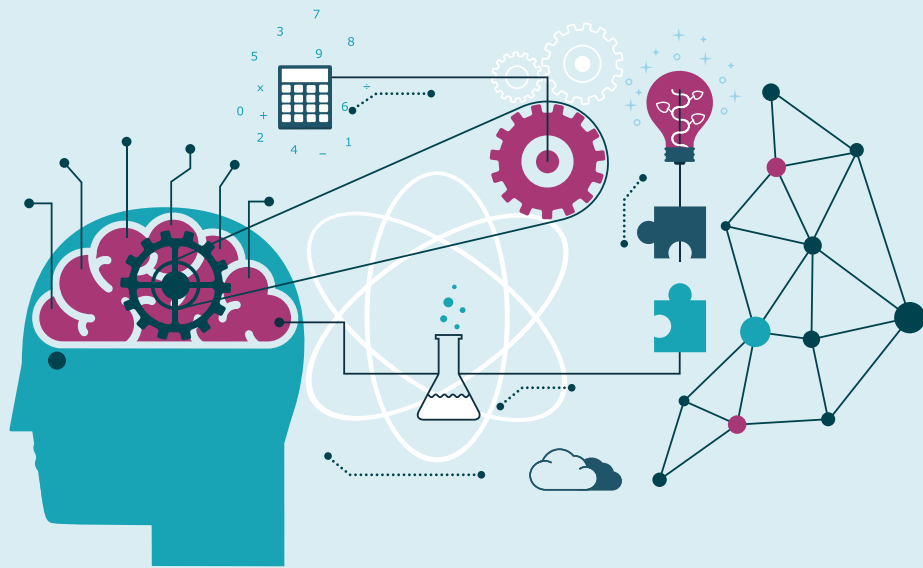
### DEVELOPING SKILLS

In addition to imparting knowledge, we believe an excellent education develops analytical and critical thinking skills as well as the ability to communicate effectively in both the spoken and written word. At Machon, learning is collaborative and reflects real world application. Active engagement in the academic process is encouraged through inquiry, exploration, articulation, and reflection, with a goal of exciting the intellect, igniting the imagination, and honing critical thinking skills. The classroom model is flexible and adaptable, changing according to the task. At times, girls sit in roundtable discussions, while moments later they may break into pods to tackle a problem in greater depth. Students are also given opportunities to present their ideas to peers in class, developing poise and the ability to communicate advanced ideas with coherence and confidence.

## FOUR YEAR CURRICULUM

	9TH GRADE	10TH GRADE	11TH GRADE	12TH GRADE
English	English/Honors	English/Honors	AP Language & Composition	AP Language & Composition
Math	Geometry/ Algebra I	Algebra II/ Geometry	Pre Calculus/ Algebra II	AP Calculus/ Pre Calculus
Science	Physics	Chemistry	Biology	AP Biology
History	World History	AP European History	AP US History	AP Government/ Intro to Economics
Stem	Intro to Computers & Coding	CIJE STEM Program	CIJE STEM Program	Elective
Gym	Gym	Gym	Gym	Gym
Art	Art	Art	Elective	Elective

# STEM CURRICULUM



Building on the strong foundation of our math and science program, and in conjunction with the CIJE (Center for Initiatives in Jewish Education) we offer an interdisciplinary and challenging STEM (Science, Technology, Engineering and Math) track.

**STEM COMBINES ACADEMICALLY CHALLENGING CONCEPTS IN MATH, SCIENCE & ENGINEERING WITH REAL WORLD APPLICATIONS.**

The hands-on curriculum exposes students to a diverse range of scientific and technological knowledge and introduces them to fundamentals in engineering and the design process. Using an inquiry based model, classes include student-directed projects in a faculty-guided environment. Courses develop multidisciplinary thinking while promoting both leadership and teamwork, preparing our girls for success in the modern economy.

- 9TH GRADE:** Introduction to Computers and Coding
- 10TH GRADE:** Introduction to Scientific Engineering
- 11TH GRADE:** Introduction to Biomedical Engineering
- 12TH GRADE:** Individualized projects  
or access to on-line courses in AP Computer Science/AP Engineering

3D PRINTER

MAKERSPACE



## HERE AT MACHON LOS ANGELES WE FEATURE...



### CHESED

The school wide Chesed program is central to our vision. The goal is to help the students reach beyond themselves and become lifelong givers. Nurturing and growing their sense of compassion and communal responsibility, the Chesed program encourages the girls to use their time, energy and talents in meaningful ways that benefit the Klal. Chesed opportunities for individuals are offered throughout the year in a variety of settings.



### IVRIT

The Ivrit program is a four year curriculum with an emphasis on modern Hebrew, focusing on listening and reading comprehension and oral presentation. Students build a broad and relevant vocabulary, study grammar, and develop effective writing skills with the goal of fluency in Ivrit and the ability to navigate comfortably while visiting or living in Israel.



### KIVUN

Kivun is an innovative curriculum created by Rebbetzin Leah Kohn specifically for high school girls that systematically and comprehensively teaches the fundamentals of Jewish thought. Kivun is designed to encourage students to make their own discoveries through questions and discussions. The goal of the course is to provide clarity in hashkafa, enabling our students to appreciate their mesorah and proudly integrate the concepts into their lives.



### INTEGRATIVE LEARNING

Broad themes are explored from both a kodesh and a general studies perspective. From Astronomy to Ancient Rome, Expulsion to Immigration, Genetics to the Courts, unforgettable, mind-expanding learning experiences are created through interdisciplinary study, unique school trips, guest speakers, creative projects, and media.



### TORAH JOURNAL

Effective communication of original thought in both the spoken and written form is a powerful and important skill. At Machon LA, girls are challenged to do just that. Every Friday a student has the opportunity to present her divrei torah. In conjunction with the Judaic Studies and English department, students prepare their divrei torah for entry in a published journal of original Torah thought.



### GUIDANCE PROGRAM

The Seminary and College Guidance program provides each student the tools and individualized guidance necessary to succeed in her chosen path. We understand that our students have high aspirations and we are prepared to serve a wide range of interests and visions, guiding every student on the journey that she and her family decides is best for her.





# SOCIAL-EMOTIONAL CURRICULUM

The Social Emotional curriculum is designed to promote self-awareness and personal growth. Grounded in current research on how teenage girls learn and thrive, our program seeks to empower our students by cultivating

A LIFELONG APPROACH TO WELLNESS,  
NURTURING EMOTIONAL INTELLIGENCE,  
FOSTERING RESILIENCE & GROWING CONFIDENCE.

## MECHANECHET PROGRAM

Overseen by Mrs. Shifra Revah, the Mechanechet program is designed to address the hashkafic, social, and societal challenges specific to high school girls. Each grade has a designated mechanechet (grade advisor) who meets with students in both individual and group settings. This program gives each student the time and space to discuss important life issues in a supportive and comfortable environment.

Serving as both teacher and role model, each mechanechet guides and supports her students within and beyond the classroom, looking out for each student's emotional, social, and spiritual well-being. The mechanechet provide our students with the opportunity to develop a meaningful relationship with a faculty member outside of the classroom. Ultimately, our innovative and comprehensive Mechanechet program helps our students become women who are filled with pride in their mesorah.

## LUNCH & LIT

Lunch & Lit is an informal book club where students meet with a teacher over sushi to review various thought-provoking books. Our fascinating and relevant book selections range from growth mindset to Jewish History. In these casual teacher-facilitated gatherings ideas emerge and lively discussions ensue. These interactions nurture both independent and shared text interpretation.

## FITNESS & NUTRITION

Fitness classes meet four times a week with various activities from yoga and core-strengthening workouts to basketball and volleyball. This much needed physical activity cultivates the mind-body connection, provides exercise and promotes an overall feeling of well-being. The girls' learning will benefit from enhanced energy and alertness, sharpened focus, and decreased stress. Additionally, part of the curriculum will be devoted to healthy lifestyle choices which include nutrition, intuitive eating, and setting SMART time management goals.

MACHON LA'S RIGOROUS EDUCATION IN A  
**JOYFUL ENVIRONMENT** PROMOTES CREATIVITY,  
INTELLECTUAL CURIOSITY & SPIRITUAL GROWTH.

# SCHOOL CULTURE

## ENVIRONMENT

Our school is a comfortable and relaxed setting where students can focus and excel. Our core principles, embodied by our staff, provide the security the girls need, while our exciting learning opportunities and flexible atmosphere gives them the space to flourish.

## SCHOOL ACHDUS

Machon LA is a community of students who are invested in each other's well being. Thoughtful programming designed to encourage friendships creates a sense of school pride and belonging with a palpable warmth in the hallways.

## STUDENT-TEACHER RELATIONSHIP

Opportunities to interact with teachers stretch beyond the classroom. Our teachers are mentors, facilitators, and coaches who support and challenge our students before, during, and after the bell. With skill and passion, Machon LA's Torah teachers inspire students with their simchas hachaim and yiras shomayim, always encouraging them to think deeply and discover the timeless centrality of Torah. All Machon faculty members are examples of lifelong learners. Mentorship programs, continuing education requirements, and ongoing professional development programs ensure that our faculty is up to date on best practices and educational research.

## PARTNERING WITH PARENTS

Our school community would not be complete without actively engaged parents. Teachers work in partnership with parents to guide the girls toward their futures. We will foster parental involvement in the school through parent education and joint learning opportunities. It is inspiring for girls to witness their parents, especially their mothers, continuing to learn Torah. In addition, promoting parent-teacher relationships will enhance the closeness and warmth of our Machon LA community.



# PARTNERSHIP OPPORTUNITIES

## FOUNDING VISIONARY CIRCLE

FOUNDING TRUSTEE	\$1M
FOUNDING BENEFACTOR	\$750K
FOUNDING BUILDER	\$500K
FOUNDING PATRON	\$250K

## FOUNDING LEADERSHIP CIRCLE

PLATINUM	\$150K
GOLD	\$100K
SILVER	\$50K
BRONZE	\$25K

For naming opportunities please speak with Rabbi Gordon.  
We look forward to recognizing our founding partners in  
perpetuity as Visionaries and Leaders of Machon Los Angeles.

## FOR MORE INFORMATION

RABBI YISROEL GORDON • [INFO@MACHONLA.ORG](mailto:INFO@MACHONLA.ORG)