

INSPIRING MESORAH TORAH STEM
NURTURING STEM PRIDE EDUCATION
FRIENDSHIPS MIND HEART KNOWLEDGE
TORAH DOS INSPI MESOR
H STEI HEART
MIND M EDUC
VLEDG RING TO
CONFIDI DOS TO
ORAH TO HIPS JO
PRIDE E MIND
NFIDENT MESOR
TORAH STEM FRIENDSHIPS JOYFUL
IENDSHIPS JOYFUL PRIDE EDUCATIO
MESORAH KNOWLEDGE MIND



BAIS YAAKOV
machon
los angeles





MENAHHEL'S MESSAGE

RABBI YISROEL GORDON

Shlomo HaMelech made a basic observation about life as a Jew.

אורח חיים למעלה למשכיל למען סור משאול מטה

There are two options. Either we strive for גדלות, climbing and ascending, or else we stagnate and decline. This growth mindset was the guiding principle behind the Machon vision: A Bais Yaakov high school where students are respected and elevated, minds are opened and challenged, potential is mined and realized, and young women are prepared for a life of spiritual growth and professional success.

Today our vision is a reality.

With Hashem's help we have built a place where the fullness of our Mesorah — the warmth of Yiddishkeit, the wisdom of Torah, the relevance of Mitzvos, and the refinement of Middos — is brought to life by an exceptional faculty of experienced, passionate, and relatable mechanchos and teachers. At the same time, Machon delivers a superior General Studies education that expands horizons and gives students the tools they need for the future of their choosing. Our start-up culture unites students, fosters a pioneering spirit, and inspires creativity and confidence. All this takes place in a joyful and nurturing environment, enriched by stimulating guest speakers, meaningful extracurricular activities, and exciting events and trips.

At Machon, Chinuch and self-achievement are driven by Shlomo HaMelech's mandate:

אורח חיים למעלה!

Rabbi Yisroel Gordon
Menahel

OUR MISSION

AT MACHON LA

we are committed to inspiring a passion for Yiddishkeit and creating a nurturing environment that challenges each girl to advance and excel in the pursuit of Torah and secular knowledge, and all aspects of personal development. Our students mature to be well-rounded, confident, and successful young women who are excited to contribute to their family, community, and the world at large.

PASSION FOR YIDDISHKEIT

We foster an environment that encourages and inspires spiritual growth, Yiras Shamayim, and refinement of character, fortifying our girls as they deepen their personal connection with Hashem and His Torah.

We instill a love of learning Torah and a commitment to becoming lifelong learners by providing students with the skills necessary for self-directed study.

We infuse our students with Ahavas Yisroel and a love of Eretz Yisroel.

We cultivate in our students pride in being a Jewish woman, in being part of our Mesorah, and in her ability to contribute positively to her community.

EXCELLENCE IN ACADEMICS

We pursue excellence with uncompromising standards for both Limudei Kodesh and General Studies.

We provide a rigorous, integrated college preparatory curriculum that prepares our graduates to excel in higher education and enables them to successfully pursue the careers of their choosing.

We create a stimulating, innovative, and integrative learning environment, promoting the development of analytical skills, intellectual curiosity, and perseverance.

EDUCATING THE WHOLE PERSON

We are an educational community that promotes growth-mindset principles and a collaborative teaching and learning environment, encouraging our students to maximize their potential. Our warm, knowledgeable, and open staff are invested in their students' success and are committed to educating the whole person.

We produce well-rounded individuals who are engaged in exciting extracurricular and co-curricular programs that encourage meaningful relationships, leadership skills, and creativity.

הנהלה



RABBI YISROEL GORDON MENAHEL

Rabbi Yisroel Gordon studied at Yeshiva Shaar HaTorah in Queens, NY and at Yeshivas Mir Yerushalayim. In 2001, Rabbi Gordon was a founding member of the Jewish Study Network in Palo Alto, California, where he was editor of the Focus journal and inspired students at the UCSC Hillel House and on faculty at Kehillah Jewish High School. The Gordons moved to Los Angeles in 2008. Prior to the founding of Machon, Rabbi Gordon directed community outreach for the Merkaz HaTorah Kollel and taught at the Bais Yaakov School for Girls.



MRS. SHIFRA REVAH DEAN OF STUDENTS

Mrs. Shifra Revah has been involved in high school and adult education for almost 30 years. After moving to Los Angeles in 1995, she has taught at Bais Yaakov, YULA Girls, and Bnos Esther. She has served as a teacher of Limudei Kodesh, mechaneches for all grades of high school, and as a seminary guidance counselor. Mrs. Revah is the beloved Rebbetzin of Adas Torah and a much sought after kallah teacher and lecturer to women in the Los Angeles community.

RABBI DOVID REFSON RABBINIC ADVISOR

LIMUDEI KODESH

Mrs. Huvi Abramczik
PIRKEI AVOS, MECHANECHES

Rabbi Asher Brander
YIRMIYAH, PARSHA

Mrs. Batyah Brander
TREI ASAR

Rabbi Yisroel Casen
HALACHA

Mrs. Simi Danishefsky
HISTORIA

Mrs. Bracha Fine
IVRIT

Rabbi Yisroel Gordon
PARSHA

Mrs. Chani Heyman
HISTORIA, NAVIIM RISHONIM

Mrs. Chaya Gitty Hirschman
SHEMOS

Mrs. Shani Hirt
YESHAYA

Mrs. Sari Kellerman
BAMIDBAR

Mrs. Sarah Lipman
YERUSHALAYIM

Mrs. Machla Perkowski
TEFILLAH

Mrs. Shifra Revah
DEVARIM, MECHANECHES

Miss Devorah Sambrowsky
MELACHIM, HISTORIA

Mrs. Malky Shapiro
INYANEI DYOMA, IVRIT

Mrs. Miriam Sullivan
KIVUN, MECHANECHES

Mrs. Chani Weiss
MISHLEI

GENERAL STUDIES

Mrs. Aviva Asaf
GEOMETRY, ALGEBRA II, PRECALCULUS

Mrs. Beth Firestone
ENGLISH

Mrs. Sandy Gordon
SPORTS

Mrs. Simone Greenberg
ART

Mrs. Robin Hack
AMERICAN HISTORY, MECHANECHES

Mrs. Shani Haghighi
DANCE

Mrs. Elana Inselmann
ENGLISH

Mr. David Joseph
CHEMISTRY, PHYSICS

Mrs. Afsoun Kohanchi
BIOLOGY

Mrs. Naomi Lipman
ALGEBRA I, ALGEBRA II

Mrs. Miryum Schoen
WORLD HISTORY

Miss Emunah Shamekh
SPORTS

Mrs. Miriam Sullivan
GEOMETRY

Mr. St. Germaine
CHEMISTRY, STEM

FACULTY



LIMUDEI KODESH

THE GOALS OF OUR
LIMUDEI KODESH
PROGRAM ARE
TWO FOLD:
דעת & לב
THE EDUCATION OF
THE MIND AND THE
EDUCATION
OF THE HEART.

יִדְעַת הַיּוֹם

Our curriculum is designed to give our students both deep understanding and broad knowledge of Chumash, Navi, Halacha, Tefillah, Machsheves Yisroel, and Jewish history. Text-based learning naturally summons students' highest intellectual abilities. This learning sparks lively and deeply meaningful Torah discussions while sharpening analytical and critical thinking skills. Together with our comprehensive Hebrew language program, students gain the tools they need to become lifelong learners.

וְהִשְׁבַּת אֶל לִבְכֶּךָ

More importantly, we endeavor to develop and expand the hearts and souls of our students. We relate to the Torah not merely as a collection of facts and laws; rather, a Jew must fall in love with Torah and Yiddishkeit, turning the da'as she learns into a relevant chochmah that speaks to her personally and drives her to dignify and elevate her life through mitzvos, learning, tefillah, character refinement, and acts of chesed. This transformative process of growth through Torah is an integral part of Machon LA's mission and will be achieved with the guidance of passionate limudei kodesh teachers in conjunction with chesed projects and our Mechaneches program.

FOUR YEAR CURRICULUM

	9TH GRADE	10TH GRADE	11TH GRADE	12TH GRADE
Chumash	Shemos	Bamidbar	Devarim	Bereishis
Navi	Melachim II	B'kuis B'Navi	Yechezkel	Haftoros
Navi/Kesuvim	Trei Asar	Yirmiyah	Mishlei Yerushalayim	Megilos Tehillim
Halacha	Shabbos	Brachos & Tefillah	Kashrus & Yichud	Shabbos
Parsha	Parsha	Parsha	Parsha	Ramban on the Parsha
Machsheves Yisroel	Pirkei Avos	Kivun Program	Kivun Program Mesilas Yesharim	Penimi Program
Historia	Galus Bavel - Bayis Sheini	Amoraim - Geonim	Rishonim - Inquisition	Acharonim - Haskalah
Language	Ivrit	Ivrit	Inyanei Dyoma B'Ivrit	Ivrit



GENERAL STUDIES

ACQUIRING KNOWLEDGE

Machon provides a rigorous college preparatory General Studies curriculum that prepares each girl to successfully embark on the path she chooses. The core subjects of Science, English, Math, and History are taught at an advanced level and culminate in AP classes. Along with building mastery in core subjects, we provide a well-rounded education, including art and an advanced STEM track.

DEVELOPING SKILLS

In addition to imparting knowledge, an excellent education develops analytical and critical thinking skills, as well as the ability to communicate effectively in both the spoken and written word. At Machon, learning is collaborative and reflects real world application. Active engagement in the academic process is encouraged through inquiry, exploration, articulation, reflection, and roundtable discussion, with a goal of exciting the intellect, igniting the imagination, and honing critical thinking skills. Students are given the opportunity to present in class, developing poise and the ability to communicate advanced ideas with coherence and confidence.

FOUR YEAR CURRICULUM

	9TH GRADE	10TH GRADE	11TH GRADE	12TH GRADE
English	Introduction to Literature	British Literature	AP Language & Composition	AP Literature
Math	Geometry Algebra I	Algebra II Geometry	Precalculus Algebra II	AP Calculus Precalculus
Science	Biology	Chemistry	Physics	AP Biology
History	World History	AP World History	AP US History	AP Government & Economics
STEM	CIJE STEM	CIJE STEM	CIJE STEM	CIJE STEM
P.E.	Dance Sports	Dance Sports	Dance Sports	Fitness
Art	Art	Art		Graphic Design



STEM CURRICULUM

THE CIJE STEM CURRICULUM COMBINES ACADEMICALLY CHALLENGING CONCEPTS IN MATH, SCIENCE & ENGINEERING WITH REAL WORLD APPLICATIONS.

The hands-on curriculum exposes students to a diverse range of scientific and technological knowledge and introduces them to fundamentals in engineering and the design process. Courses develop multidisciplinary thinking while promoting both leadership and teamwork, preparing our girls for success in the modern economy. In 2019, Machon students won first prize for best presentation at the CIJE Innovation Day Science Fair.

- Introduction to Computers and Coding
- Introduction to Scientific Engineering
- Introduction to Biomedical Engineering

NINTH GRADE SCHEDULE

MONDAY	TUESDAY	WEDNESDAY	THURSDAY	FRIDAY
SHACHARIS				
SHEMOS	SHEMOS	SHEMOS	SHEMOS	HALACHA
PIRKEI AVOS	TREI ASAR	MECHANECHES	PIRKEI AVOS	BIOLOGY
RECESS				LIKRAAS SHABBOS
STEM	IVRIT	IVRIT	BIOLOGY	BIOLOGY
BIOLOGY	MELACHIM	G.O.	MELACHIM	PARSHA
LUNCH				ART
IVRIT	HISTORY	HALACHA	IVRIT	
HISTORY	DANCE	HISTORIA	HISTORIA	
MINCHA				
ENGLISH	MATH	MATH	MATH	
MATH	ENGLISH	TREI ASAR	SPORTS	
SPORTS	STEM	ENGLISH	ENGLISH	



HERE AT MACHON LOS ANGELES WE FEATURE...



VAADIM

Vaadim are bi-monthly meetings in a warm out-of-school setting. Through lively roundtable discussions of Mussar topics, girls build relationships with role-model teachers and develop skills for growth in Middos and Avodas Hashem.



KIVUN

Kivun is an innovative curriculum created by Rebbetzin Leah Kohn specifically for high school girls that systematically and comprehensively teaches the fundamentals of Yahadus. Kivun is designed to encourage students to make their own discoveries through questions and discussions. The goal of the course is to provide clarity in hashkafa, enabling our students to appreciate their mesorah and proudly integrate Torah concepts into their lives.



INTEGRATIVE LEARNING

Broad themes are explored from both a Limudei Kodesh and Limudei Chol perspective. From Astronomy to Ancient Rome, Expulsion to Immigration, Genetics to the Courts, unforgettable, mind-expanding learning experiences are created through interdisciplinary study, unique school trips, guest speakers, creative projects, and media.



TORAH JOURNAL

A collaborative project of the Limudei Kodesh and English departments, students prepare written divrei Torah for entry in a published journal. Enhanced by the graphic design, artwork, and poetry of Machon students, the Torah Journal offers a broad range of opportunities for creativity, leadership, and self-expression.



IVRIT

Machon utilizes a proven ulpan-stye Modern Hebrew curriculum created by Mrs. Sara Yankelewitz. Students build a broad and relevant vocabulary and develop effective writing skills with the goal of fluency in Ivrit. A rigorous Ivrit program enhances our girls' ability to learn Torah and allows them to navigate comfortably while visiting or living in Eretz Yisroel.



GUIDANCE PROGRAM

Machon's Seminary and College Guidance program provides each student the tools and individualized guidance necessary to succeed in her post high school path. We understand that our students have high aspirations and we are prepared to guide every student on the journey that she and her family decides is best for her to achieve her potential as a Bas Yisroel.



SOCIAL-EMOTIONAL

MECHANECHES PROGRAM

Overseen by Mrs. Shifra Revah, the Mechaneches program is designed to address the hashkafic, social, emotional, and societal challenges specific to high school girls. Each grade has a designated mechaneches (grade advisor) who meets with students in both individual and group settings. This program gives each student the time and space to discuss important life issues in a supportive and comfortable environment, and the opportunity to develop a meaningful relationship with a role model faculty member outside of the classroom.

FITNESS & NUTRITION

Physical education classes meet three times a week with varying activities, from dance and core-strengthening workouts to basketball and tennis. Exercise promotes an overall feeling of well-being, and the girls' learning will benefit from enhanced energy and alertness, sharpened focus, and decreased stress. Additionally, part of the curriculum will be devoted to studying healthy lifestyle choices, including nutrition.

The Social-Emotional curriculum is designed to promote self-awareness and personal growth. Grounded in current research on how teenage girls best learn and thrive, our program seeks to empower our students by cultivating

A LIFELONG APPROACH TO WELLNESS,
NURTURING EMOTIONAL INTELLIGENCE,
FOSTERING RESILIENCE & GROWING CONFIDENCE.

CHESSED



Chasdei Dovid

L'ilui Nishmas Reb Yisroel Dovid Mikel z"l,
Yisroel Dovid Ben Chaim

The school-wide Chessed program is central to our vision. The goal is to help the students reach beyond themselves and become lifelong givers. Nurturing and growing their sense of compassion and communal responsibility, the Chessed program encourages the girls to use their time, energy, and talents in meaningful ways that benefit the Klal. Chessed opportunities for individuals are offered throughout the year in a variety of settings.



INSPIRING GROWTH



YIMEI IYUN

Using a combination of informative talks, multi-media presentations, and hands-on activities, Yimei Iyun at Machon give girls a richer, more meaningful experience of the Yamim Tovim. Current events and trends are also addressed, providing opportunities for students to grow their knowledge and reflect on their place in society as from Jews.



SELF AWARENESS

Understanding that lasting growth is a slow and steady process, we provide daily sessions of mussar-oriented learning throughout the week, with a focus on Shmiras Halashon and Emunah. The weekly Mechaneches period, led by Mrs. Shifra Revah, addresses Bein Adam L'chaveiro topics, helping the girls develop their interpersonal relationships with understanding and sensitivity.



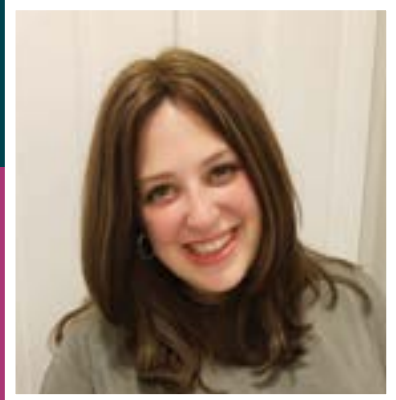
GUEST SPEAKERS

Machon seeks thought-provoking and inspiring guest speakers to educate and motivate both our students and the broader community, always with dialogue and engagement in mind. Our students have learned about Asarah B'Teves from a Rosh Kollel, experienced the emunah of the mother of a terrorism victim, discussed problem-solving with a family therapist, deconstructed advertising with a marketing professional, and discovered the value of making mistakes with a founder of CIJE.



CREATIVE EXPRESSION

Our programming is designed for students to stretch themselves creatively. Through various mediums and art forms, students work toward a polished and well thought-out culminating project. Whether it is an exhibit or performance, students will be encouraged to try different forms of expression, discovering and developing their talents through independent study and collaboration, ultimately surpassing their own expectations.



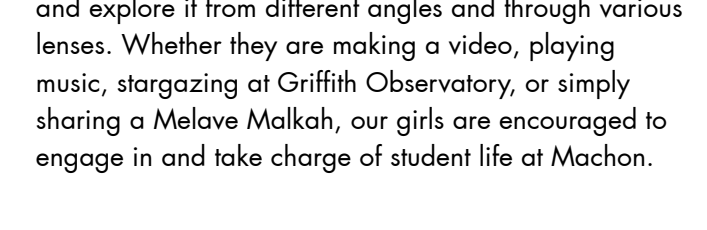
MRS. BATSHEVA SOIBELMAN

DIRECTOR OF STUDENT ACTIVITIES

Drawing on her broad experience as a teacher of Torah, the head counselor of a popular camp, and an extracurricular coordinator, Mrs. Batsheva Soibelman's creativity and passion for chinuch fill the halls of Machon with infectious joy and energy. Together with a talented support staff, Mrs. Soibelman organizes a wide range of engaging and substantive student-led activities. From Shabbatonim and class trips to songwriting and theatrical productions, she inspires the girls to shine as leaders and creators.



Through the visual and performing arts, interactive games, hands-on projects and field trips, Machon provides a joyful environment that inspires personal growth. Each year, we choose a timely and relevant theme such as Identity, Relationships, or Leadership, and explore it from different angles and through various lenses. Whether they are making a video, playing music, stargazing at Griffith Observatory, or simply sharing a Melave Malkah, our girls are encouraged to engage in and take charge of student life at Machon.



STUDENT LIFE





SCHOOL CULTURE

MACHON LA'S RIGOROUS EDUCATION IN A
JOYFUL ENVIRONMENT PROMOTES CREATIVITY,
INTELLECTUAL CURIOSITY & SPIRITUAL GROWTH.

ENVIRONMENT

Our school is a comfortable and relaxed setting where students can focus and excel. Our core principles, embodied by our staff, provide the security the girls need, while our exciting learning opportunities and warm atmosphere gives them the space to flourish.

SCHOOL ACHDUS

Machon LA is a community of students who are invested in each other's well-being. Thoughtful programming designed to encourage friendships creates a sense of school pride and belonging with a palpable warmth in the hallways.

STUDENT-TEACHER RELATIONSHIPS

Opportunities to interact with teachers stretch beyond the classroom. Our teachers are mentors, facilitators, and coaches who support and challenge our students before, during, and after the bell rings. With skill and passion, Machon LA's Torah teachers inspire students with their simchas hachaim and yiras shomayim, always encouraging them to think deeply and discover the timeless centrality of Torah. All Machon faculty members are examples of lifelong learners. Mentorship programs, continuing education requirements, and ongoing professional development programs ensure that our faculty is up to date on best practices and educational research.

PARTNERING WITH PARENTS

Our school community would not be complete without actively engaged parents. Teachers work in partnership with parents to guide the girls toward their future. We foster parental involvement in the school through parent education and joint learning opportunities. It is inspiring for girls to witness their parents, especially their mothers, continuing to learn Torah. In addition, promoting parent-teacher relationships will enhance the closeness and warmth of our Machon LA community.

FOR MORE INFORMATION

424.274.0955 • INFO@MACHONLA.ORG • MACHONLA.ORG
1030 S. ROBERTSON BLVD. LOS ANGELES, CA 90035